



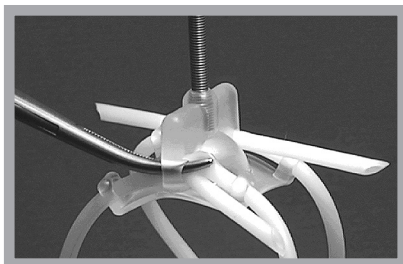
## Intended Use

Protects externalized catheters and transmits torque to a swivel for rat infusion or blood sampling. Intended for single use. Tethered animals must be housed one-per-cage.

## Assembly

Harnesses are normally supplied fully assembled. These instructions apply only if you have ordered individual parts (saddles, belly bands, spring).

1. Wet tubing and pull both pieces through center hole with a hemostat as shown. It will be a tight fit. Note correct orientation.
2. Insert spring by twisting clockwise to compress. Spring should be flush with underside of dome. (Also twist clockwise to remove.)

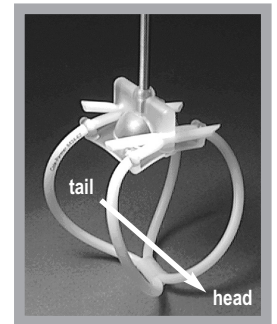


## Use

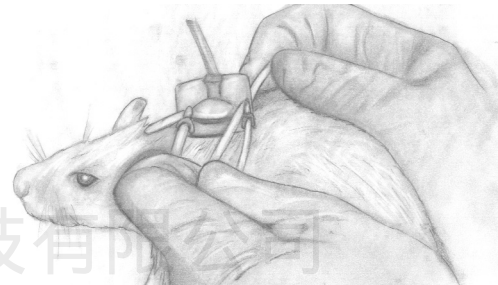
1. Connect top of spring tether to [swivel](#). For stainless steel models, tighten V-block clamp using 0.050" allen wrench; for plastic models, twist clockwise for press fit (CIH95 only).
2. Feed catheter or IV lines from animal up through the protective spring via the opening in the underside in the harness dome. CIH95 is designed for one catheter; CIH105 for two. Connect primed IV lines to a swivel.



3. Fit the loosely assembled harness over the animal's head. The belly bands should go around the front legs and the harness should be oriented with the animal's spine as shown.



4. Pull belly bands to tighten harness around the animal. Leave just enough slack that you can fit your index finger (or a 3cc syringe) between the bands and the animal's belly. Check tension daily and adjust as needed as the animal grows.



5. Trim excess belly band tubing using scissors, but allow enough for the animal to grow.

## Troubleshooting

*Chaffing.* Loosen belly bands, following guidelines for tightness above. Check for correct orientation (step 3 above).

*Animal chews at belly bands.* Belly bands may be too tight or too loose. Follow guidelines in step 4 above. Some rat strains are more likely than others to chew at the harness.

*Animal escapes from harness.* Tighten belly bands. Follow guidelines in step 4 above.

*Animal chews spring tether.* Install counter-balanced arm, such as [CM375BP](#), to remove slack from the tether.

Please [report](#) any quality problems to Instech.

## Specifications

See <http://www.instechlabs.com/downloads/tethers.pdf>.