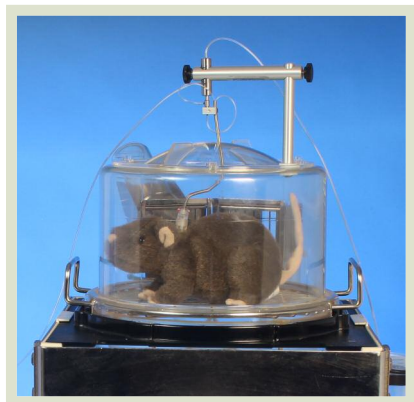


BILE COLLECTION



Instech's two channel Vascular Access Buttons and Harnesses have simplified and refined rat bile collection. Catheters in the bile duct and duodenum are connected to the ports of the button or harness so that bile can flow in an extra-corporeal loop while the animal is recovering from surgery and in transport. To start sampling, simply remove the loop connector, plug in a mating tether with a swivel, and collect bile outside the cage at animal level.

Additional configurations are available for simultaneous infusion or blood sampling, and a similar system is available for mice. Many animal vendors can perform the catheterizations and install the button or harness with loop as a surgical service.

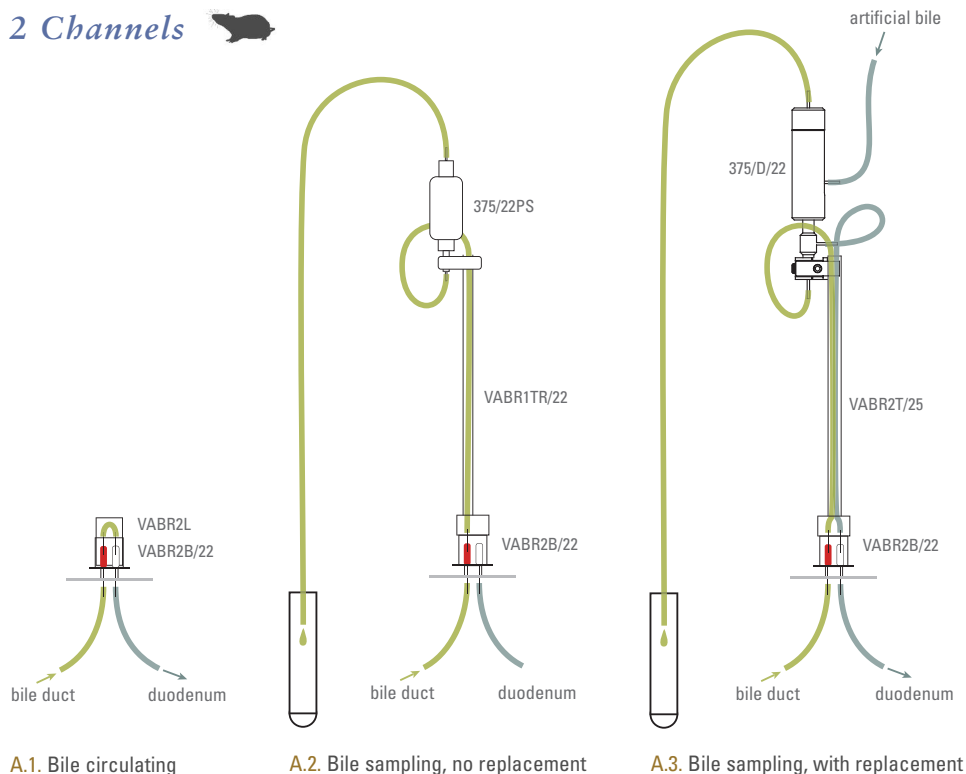


VABR2B/22 (p29)
VABR2L
2-channel button
with loop connector

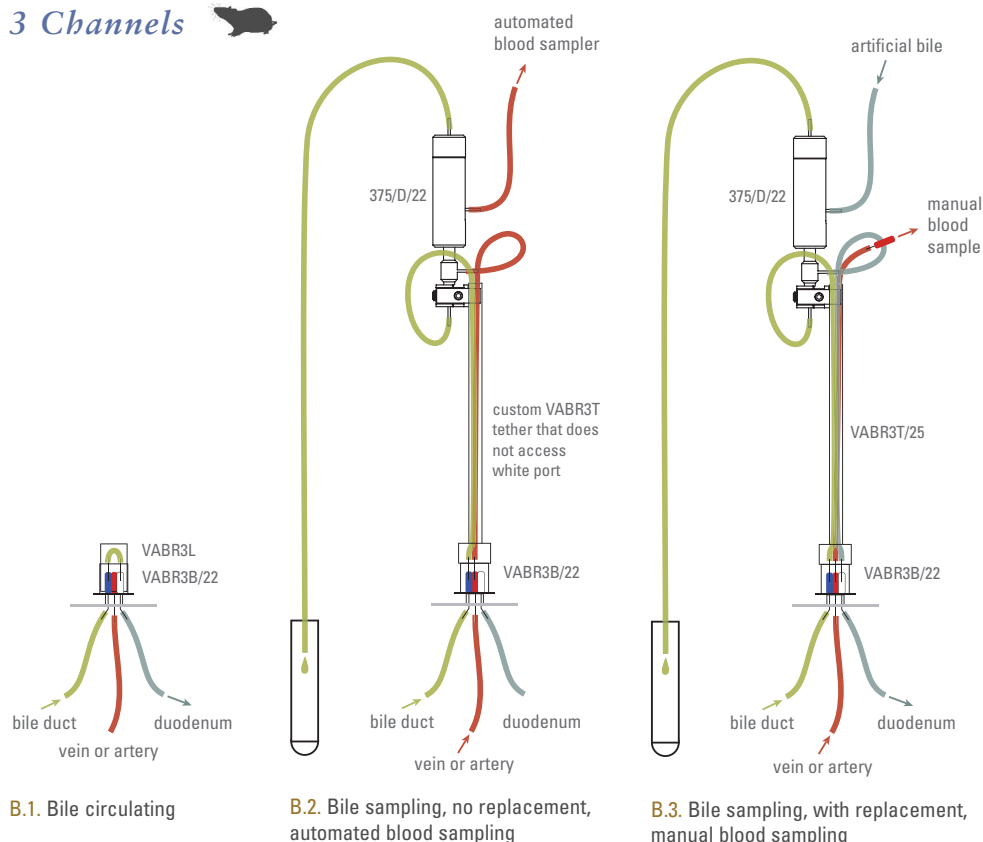


VAHD115AB (p32)
VAHD115L
2-channel harness
with loop connector

2 Channels



3 Channels



www.instechlabs.com/Infusion/systems/ratbilecollection.php

www.instechlabs.com/Infusion/systems/mousebilecollection.php