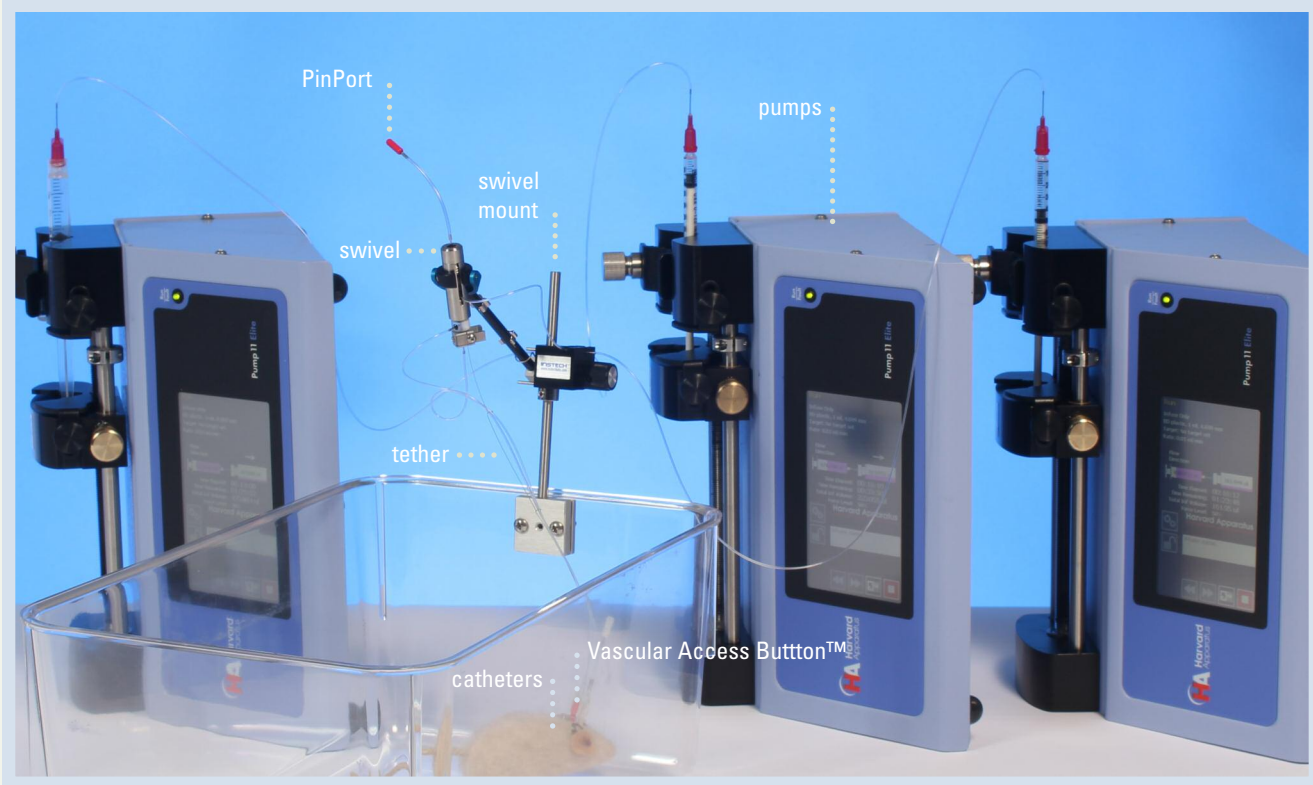


GLUCOSE CLAMP

Hyperinsulinemic-Euglycemic Clamp, Mouse



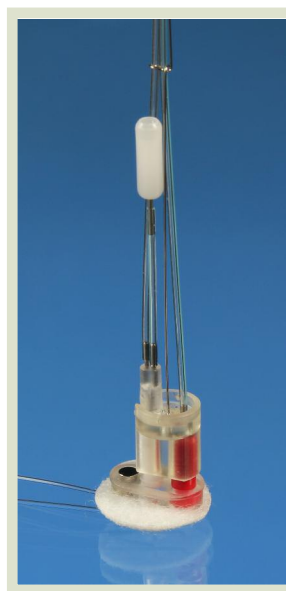
The hyperinsulinemic-euglycemic clamp is considered the gold standard method for assessing insulin action in vivo. Conducting these experiments on freely-moving rodents, particularly mice, can be difficult, not least due to the jugular vein and carotid artery catheterization surgery.

Instech now offers complete systems for mice and rats, starting with the catheters that connect to two-channel Vascular Access Buttons, special tethers with 3- and 4-way connectors, up to the infusion pumps that control delivery of insulin, glucose, red blood cells and other infusates.

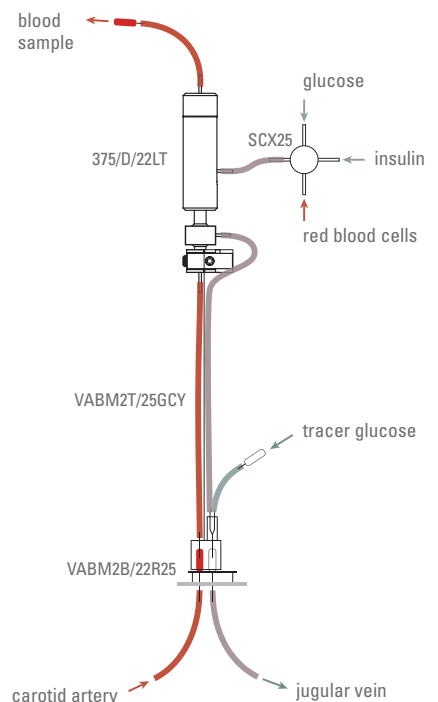
The mouse system is based on the techniques developed and taught by the Vanderbilt MMPC. The two-channel VAB is Instech's version of the researcher-constructed MASA™, simplifying connection and permitting group housing when not on study.

www.instechlabs.com/Infusion/systems/glucoseclampmice.php

MASA is a trademark of the Vanderbilt MMPC. <https://labnodes.vanderbilt.edu/mmhc>



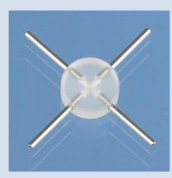
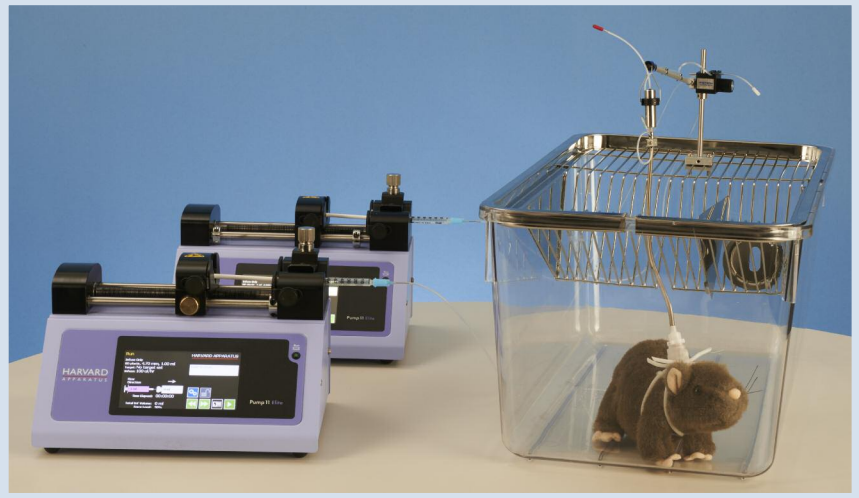
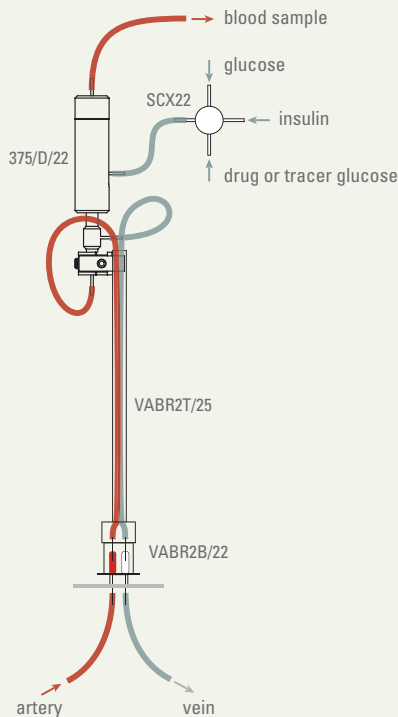
VABM2T/25GCV NEW
VABM2B/22R25 (p34)
 2ch Vascular Access Button
 with Glucose Clamp Tether



GLUCOSE CLAMP



Hyperinsulinemic-Euglycemic Clamp, Rat



SCX22 (p51)
4-way connector



MCLA/GC (p46)
Swivel arm with pocket
for 4-way connector



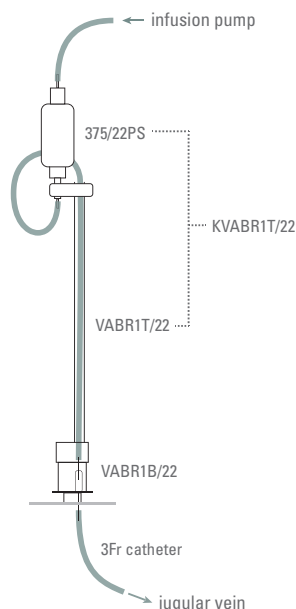
VABR2T/25 (p29)
VABR2B/22
2ch Vascular Access Button

www.instechlabs.com/Infusion/systems/glucoseclamps.php

WHOLE BODY PLETHYSMOGRAPHY



Photo of FinePointe WBP chamber
courtesy of Data Sciences International



Instech's swivel and tether systems can be integrated into whole body plethysmography chambers to combine measurement of respiratory function with infusion or blood sampling.

The swivel is held in an o-ring seal at the top of the chamber. Tether lengths should be optimized for the height of the chamber. The Vascular Access Button™ and Harness systems make it easy to move an animal into and out of the chamber.

www.instechlabs.com/Infusion/systems/wbp.php